

PULEGGE POLY-V



DRIVE  
SOLUTIONS

# Pulegge Poly-V





## Pulegge SIT - Poly-V

Le pulegge SIT Poly-V sono progettate e realizzate con la massima precisione per un perfetto accoppiamento con le gole della cinghia e garantiscono prestazioni e durata ottimale nel tempo della trasmissione.

SIT, come costruttore, è in grado di fornire pulegge a disegno per soddisfare ogni esigenza tecnico-costruttiva.

È possibile l'uso di materiali come l'alluminio o plastiche termoidurenti o termoplastiche. Profilo H disponibile a richiesta.

### Pulegge Poly-V per bussola conica SER-SIT®

Materiale: Per diametri minori o uguali a 50 mm: acciaio  
Per diametri oltre i 50 mm: ghisa grigia

#### Sezioni:

- H
- J
- K
- L
- M



#### Esecuzioni speciali

Oltre ai materiali standard, su richiesta sono disponibili esecuzioni speciali in alluminio, plastica termoidurente e termoplastica. Per velocità periferiche superiori a 33 m/s si consiglia vivamente di utilizzare l'acciaio come materiale di costruzione.

$$\text{velocità periferica [m/s]} = \frac{\text{diametro della puleggia [mm]} \cdot \text{rpm}}{19100}$$

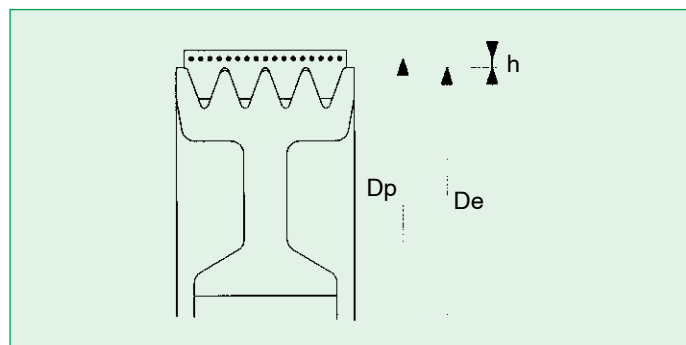
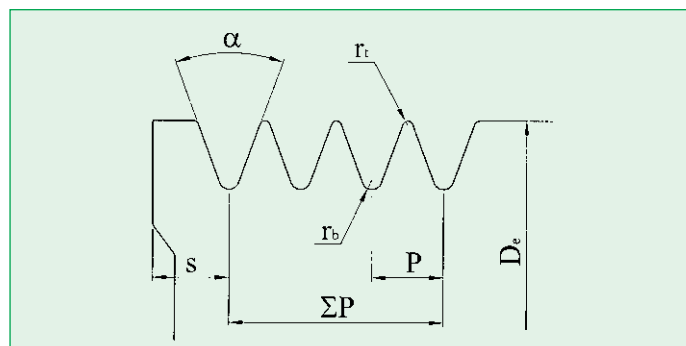
#### Bilanciamento

I tamburi SIT Poly-V hanno un grado di equilibratura statica G6,3 a 1500 giri/min. secondo la norma ISO 1940. Su richiesta è possibile eseguire l'equilibratura statica a gradi superiori o l'equilibratura dinamica.

### DIMENSIONI E TOLLERANZE DELLE GOLE

Secondo la norma ISO 9982

Sezione	$\alpha^\circ$	P [mm]	$r_t$ max. [mm]	$r_b$ min. [mm]	S min. [mm]	h [mm]
H	$40 \pm 0,5$	$1,60 \pm 0,03$	0,15	0,30	1,3	0,8
J	$40 \pm 0,5$	$2,34 \pm 0,03$	0,20	0,40	1,8	1,2
K	$40 \pm 0,5$	$3,56 \pm 0,05$	0,25	0,50	2,5	2,0
L	$40 \pm 0,5$	$4,70 \pm 0,05$	0,40	0,40	3,3	3,0
M	$40 \pm 0,5$	$9,40 \pm 0,08$	0,75	0,75	6,4	4,0



$D_e$  = diametro esterno  
 $D_p$  = diametro primitivo  
 $h = (D_p - D_e)/2$

#### Note

A causa del costante miglioramento dei nostri prodotti, i dati tecnici delle pulegge possono essere soggetti a modifiche. Per motivi tecnici e produttivi in alcuni casi potrebbero essere utilizzati materiali diversi da quelli indicati nel catalogo. Per conferma del materiale effettivamente disponibile contattare il servizio clienti.

## Dimensioni delle pulegge Poly-V per montaggio con bussola conica SER-SIT®

Le pulegge di piccolo diametro sono fornite con esecuzione a mozzo pieno preforato. (Rif. fig. 1)



### PBY Poly-V J

De [mm]	N° di gole	Fig.	Bussola SER-SIT®	L [mm]	z [mm]	M [mm]	U [mm]	d [mm]	W [mm]
20	4	1	-	22,5	-	-	-	5,0	13,5
	8	1	-	32,0	-	-	-	5,0	23,0
	12	1	-	41,5	-	-	-	5,0	32,5
	16	1	-	51,0	-	-	-	5,0	42,0
	20	1	-	61,0	-	-	-	5,0	52,0
25	4	1	-	22,5	-	-	-	5,0	13,5
	8	1	-	32,0	-	-	-	5,0	23,0
	12	1	-	41,5	-	-	-	5,0	32,5
	16	1	-	51,0	-	-	-	5,0	42,0
	20	1	-	61,0	-	-	-	5,0	52,0
30	4	1	-	22,5	-	-	-	9,5	13,5
	8	1	-	32,0	-	-	-	9,5	23,0
	12	1	-	41,5	-	-	-	9,5	32,5
	16	1	-	51,0	-	-	-	9,5	42,0
	20	1	-	61,0	-	-	-	9,5	52,0
35	4	1	-	22,5	-	-	-	9,5	13,5
	8	1	-	32,0	-	-	-	9,5	23,0
	12	1	-	41,5	-	-	-	9,5	32,5
	16	1	-	51,0	-	-	-	9,5	42,0
	20	1	-	61,0	-	-	-	9,5	52,0
40	4	1	-	22,5	-	-	-	12,0	13,5
	8	1	-	32,0	-	-	-	12,0	23,0
	12	1	-	41,5	-	-	-	12,0	32,5
	16	1	-	51,0	-	-	-	12,0	42,0
	20	1	-	61,0	-	-	-	12,0	52,0
45	4	1	-	22,5	-	-	-	12,0	13,5
	8	1	-	32,0	-	-	-	12,0	23,0
	12	1	-	41,5	-	-	-	12,0	32,5
	16	1	-	51,0	-	-	-	12,0	42,0
	20	1	-	61,0	-	-	-	12,0	52,0
50	4	1	-	22,5	-	-	-	12,0	13,5
	8	1	-	32,0	-	-	-	12,0	23,0
	12	1	-	41,5	-	-	-	12,0	32,5
	16	1	-	51,0	-	-	-	12,0	42,0
	20	1	-	61,0	-	-	-	12,0	52,0
56	4**	7	1108	23,0	9,5	50	-	-	13,5
	8**	3	1108	23,0	-	-	-	-	23,0
	12	1	-	41,5	-	-	-	12,0	32,5
	16	1	-	51,0	-	-	-	12,0	42,0
	20	1	-	61,0	-	-	-	12,0	52,0
60	4	7	1108	23,0	9,5	50	-	-	13,5
	8	3	1108	23,0	-	-	-	-	23,0
	12	2	1108	23,0	9,5	-	45	-	32,5
	16	1	-	51,0	-	-	-	12,0	42,0
	20	1	-	61,0	-	-	-	12,0	52,0
63	4	7	1108	23,0	9,5	50	-	-	13,5
	8	3	1108	23,0	-	-	-	-	23,0
	12	2	1108	23,0	9,5	-	45	-	32,5
	16	1	-	51,0	-	-	-	12,0	42,0
	20	1	-	61,0	-	-	-	12,0	52,0
67	4	7	1108	23,0	9,5	50	-	-	13,5
	8	3	1108	23,0	-	-	-	-	23,0
	12	2	1108	23,0	9,5	-	51	-	32,5
	16	1	-	51,0	-	-	-	12,0	42,0
	20	1	-	61,0	-	-	-	12,0	52,0

\*\*= Materiale: ghisa sferoidale.

#### Esempio di codifica

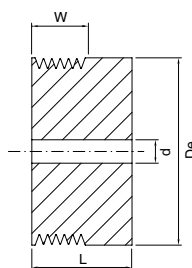
PBY 200 J 8

Puleggia Poly-V per bussola conica

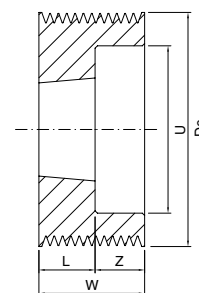
Diametro esterno in mm

Profilo

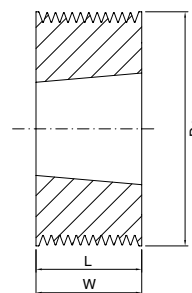
Numero nervature



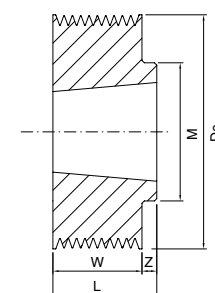
1



2



3



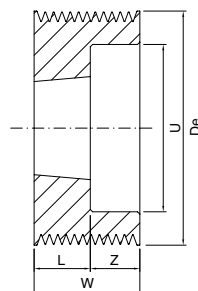
7

## Dimensioni delle pulegge Poly-V per montaggio con bussola conica SER-SIT®

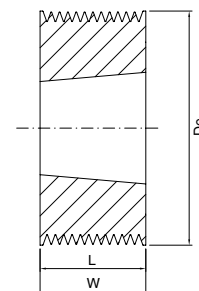


### » PBY Poly-V J

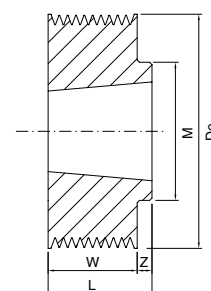
De [mm]	N° di gole	Fig.	Bussola SER-SIT®	L [mm]	z [mm]	M [mm]	U [mm]	W [mm]
71	4	7	1108	23	9,5	60	-	13,5
	8	3	1108	23	-	-	-	23,0
	12	2	1108	23	9,5	-	55	32,5
	16**	3	1215	42	-	-	55	42,0
	20	2	1215	42	10,0	-	55	52,0
75	4	7	1108	23	9,5	60	-	13,5
	8	3	1108	23	-	-	-	23,0
	12*	2	1610	26	6,5	-	59	32,5
	16*	2	1610	26	16,0	-	59	42,0
	20**	2	1615	42	10,0	-	59	52,0
80	4*	7	1310	26	12,5	70	-	13,5
	8**	7	1310	26	3,0	70	-	23,0
	12*	2	1610	26	6,5	-	64	32,5
	16*	2	1610	26	16,0	-	64	42,0
	20*	2	1615	42	10,0	-	64	52,0
85	4*	7	1310	26	12,5	70	-	13,5
	8**	7	1310	26	3,0	70	-	23,0
	12**	2	1610	26	6,5	-	69	32,5
	16**	2	1610	26	16,0	-	69	42,0
	20	2	1615	42	10,0	-	69	52,0
90	4**	7	1610	26	12,5	82	-	13,5
	8	7	1610	26	3,0	82	-	23,0
	12	2	1610	26	6,5	-	74	32,5
	16	2	1610	26	16,0	-	74	42,0
	20	2	1615	42	10,0	-	74	52,0
95	4	7	1610	26	12,5	82	-	13,5
	8	7	1610	26	3,0	82	-	23,0
	12	2	1610	26	6,5	-	79	32,5
	16	2	1610	26	16,0	-	79	42,0
	20	2	1615	42	10,0	-	79	52,0
100	4	7	1610	26	12,5	82	-	13,5
	8	7	1610	26	3,0	82	-	23,0
	12	2	1610	26	6,5	-	82	32,5
	16	2	1610	26	16,0	-	82	42,0
	20	2	1615	42	10,0	-	82	52,0
106	4	7	1610	26	12,5	88	-	13,5
	8	7	1610	26	3,0	88	-	23,0
	12	2	1610	26	6,5	-	88	32,5
	16	2	1610	26	16,0	-	88	42,0
	20	2	1615	42	10,0	-	88	52,0
112	4	7	1610	26	12,5	90	-	13,5
	8	7	1610	26	3,0	90	-	23,0
	12	2	1610	26	6,5	-	94	32,5
	16	2	1610	26	16,0	-	94	42,0
	20	2	1615	42	10,0	-	94	52,0
118	4	7	1610	26	12,5	90	-	13,5
	8	7	1610	26	3,0	90	-	23,0
	12	2	2012	32	0,5	-	98	32,5
	16	2	2012	32	10,0	-	98	42,0
	20	2	2012	32	20,0	-	98	52,0
125	4	8	1610	26	12,5	90	109	13,5
	8	8	1610	26	3,0	90	109	23,0
	12	2	2012	32	0,5	-	105	32,5
	16	2	2012	32	10,0	-	105	42,0
	20	2	2517	45	7,0	-	105	52,0



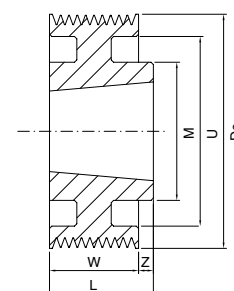
2



3



7



8

\* = Materiale: acciaio C45  
 \*\* = Materiale: ghisa sferoidale.

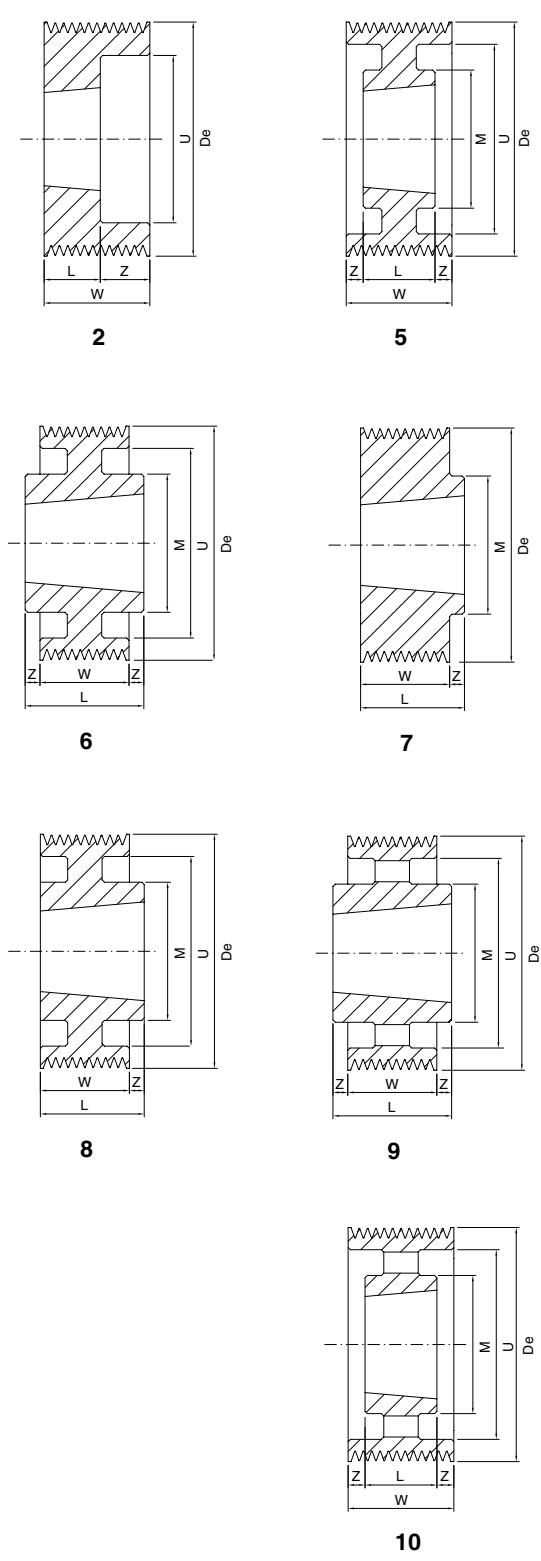
PULEGGE POLY-V

# Dimensioni delle pulegge Poly-V per montaggio con bussola conica SER-SIT®



## » PBY Poly-V J

De [mm]	N° di gole	Fig.	Bussola SER-SIT®	L [mm]	z [mm]	M [mm]	U [mm]	W [mm]
132	4	8	1610	26	12,5	90	116	13,5
	8	8	1610	26	3,0	90	116	23,0
	12	2	2012	32	0,5	-	112	32,5
	16	2	2012	32	10,0	-	112	42,0
	20	2	2517	45	7,0	-	112	52,0
140	4	8	1610	26	12,5	90	124	13,5
	8	8	1610	26	3,0	90	124	23,0
	12	7	2517	45	12,5	120	-	32,5
	16	7	2517	45	3,0	120	-	42,0
	20	2	2517	45	7,0	-	124	52,0
160	4	8	2012	32	18,5	110	144	13,5
	8	8	2012	32	9,0	110	144	23,0
	12	8	2517	45	12,5	120	140	32,5
	16	8	2517	45	3,0	120	140	42,0
	20	2	2517	45	7,0	-	140	52,0
180	4	6	2012	32	9,3	110	164	13,5
	8	6	2012	32	4,5	110	164	23,0
	12	6	2517	45	6,3	120	160	32,5
	16	6	2517	45	1,5	120	160	42,0
	20	5	2517	45	3,5	120	160	52,0
200	4	6	2012	32	9,3	110	185	13,5
	8	6	2012	32	4,5	110	185	23,0
	12	6	2517	45	6,3	120	180	32,5
	16	6	2517	45	1,5	120	180	42,0
	20	5	2517	45	3,5	120	180	52,0
224	4	6	2012	32	9,3	110	208	13,5
	8	6	2012	32	4,5	110	208	23,0
	12	6	2517	45	6,3	120	204	32,5
	16	6	2517	45	1,5	120	204	42,0
	20	5	2517	45	3,5	120	204	52,0
250	4	9	2012	32	9,3	110	234	13,5
	8	9	2012	32	4,5	110	234	23,0
	12	6	2517	45	6,3	120	230	32,5
	16	6	2517	45	1,5	120	230	42,0
	20	5	2517	45	3,5	120	230	52,0
280	4	9	2012	32	9,3	110	264	13,5
	8	9	2012	32	4,5	110	264	23,0
	12	9	2517	45	6,3	120	260	32,5
	16	9	2517	45	1,5	120	260	42,0
	20	10	2517	45	3,5	120	260	52,0
315	4	9	2012	32	9,3	110	299	13,5
	8	9	2012	32	4,5	110	299	23,0
	12	9	2517	45	6,3	120	295	32,5
	16	9	2517	45	1,5	120	295	42,0
	20	10	2517	45	3,5	120	295	52,0
355	4	9	2517	45	15,7	120	339	13,5
	8	9	2517	45	11,0	120	339	23,0
	12	9	2517	45	6,3	120	335	32,5
	16	9	3020	52	5,0	146	335	42,0
	20	10	3020	52	-	146	335	52,0
400	4	9	2517	45	15,8	120	380	13,5
	8	9	2517	45	11,0	120	380	23,0
	12	9	2517	45	6,3	120	380	32,5
	16	9	3020	52	5,0	146	380	42,0
	20	10	3020	52	-	146	380	52,0

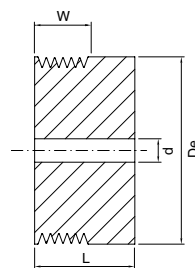


## Dimensioni delle pulegge Poly-V per montaggio con bussola conica SER-SIT®

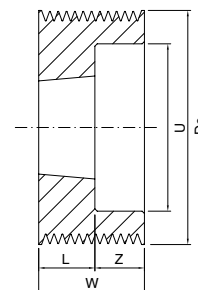


### » PBV Poly-V K

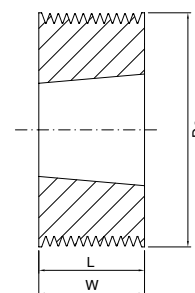
De [mm]	N° di gole	Fig.	Bussola SER-SIT®	L [mm]	z [mm]	M [mm]	U [mm]	d [mm]	W [mm]
50	4	1	-	32	-	-	-	12	20,5
	6	1	-	40	-	-	-	12	28,5
	8	1	-	48	-	-	-	12	36,0
	10	1	-	54	-	-	-	12	42,0
	12	1	-	61	-	-	-	12	49,0
56	4*	3	1108	20,5	-	-	-	-	20,5
	6*	1	-	40	-	-	-	12	28,5
	8*	1	-	48	-	-	-	12	36,0
	10*	1	-	54	-	-	-	12	42,0
	12*	1	-	61	-	-	-	12	49,0
60	4*	3	1108	20,5	-	-	-	-	20,5
	6*	2	1108	22	6,5	-	45	-	28,5
	8*	1	-	48	-	-	-	12	36,0
	10*	1	-	54	-	-	-	12	42,0
	12*	1	-	61	-	-	-	12	49,0
63	4	3	1108	20,5	-	-	-	-	20,5
	6	2	1108	22	6,5	-	48	-	28,5
	8	1	-	48	-	-	-	12	36,0
	10	1	-	54	-	-	-	12	42,0
	12	1	-	61	-	-	-	12	49,0
67	4	3	1108	20,5	-	-	-	-	20,5
	6	2	1108	22	6,5	-	51	-	28,5
	8	1	-	48	-	-	-	12	36,0
	10	1	-	54	-	-	-	12	42,0
	12	1	-	61	-	-	-	12	49,0
71	4	3	1108	20,5	-	-	-	-	20,5
	6	2	1108	23	6,5	-	55	-	28,5
	8**	2	1210	26	10	-	55	-	36,0
	10**	3	1215	42	-	-	-	-	42,0
	12**	2	1215	42	7	-	55	-	49,0
75	4**	3	1108	20,5	-	-	-	-	20,5
	6**	2	1210	26	2,5	-	59	-	28,5
	8**	2	1210	26	10	-	59	-	36,0
	10**	3	1215	42	-	-	-	-	42,0
	12**	2	1215	42	7	-	59	-	49,0
80	4**	7	1210	26	5,5	70	-	-	20,5
	6**	2	1210	26	2,5	-	64	-	28,5
	8**	2	1210	26	10	-	64	-	36,0
	10	3	1215	42	-	-	-	-	42,0
	12	2	1215	42	7	-	64	-	49,0
85	4	7	1210	26	5,5	70	-	-	20,5
	6	2	1210	26	2,5	-	69	-	28,5
	8	2	1210	26	10	-	69	-	36,0
	10	3	1215	42	-	-	-	-	42,0
	12	2	1215	42	7	-	69	-	49,0
90	4	7	1210	26	5,5	82	-	-	20,5
	6	2	1210	26	2,5	-	74	-	28,5
	8	2	1210	26	10	-	74	-	36,0
	10	3	1215	42	-	-	-	-	42,0
	12	2	1215	42	7	-	74	-	49,0
95	4	7	1610	26	5,5	90	-	-	20,5
	6	2	1610	26	2,5	-	79	-	28,5
	8	2	1610	26	10	-	79	-	36,0
	10	3	1615	42	-	-	-	-	42,0
	12	2	1615	42	7	-	79	-	49,0
100	4	7	1610	26	5,5	90	-	-	20,5
	6	2	1610	26	2,5	-	82	-	28,5
	8	2	1610	26	10	-	82	-	36,0
	10	3	1615	42	-	-	-	-	42,0
	12	2	1615	42	7	-	82	-	49,0



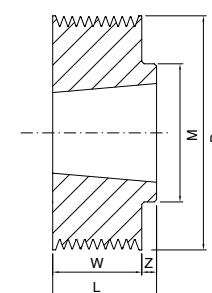
1



2



3



7

\* = Materiale: acciaio C45  
 \*\* = Materiale: ghisa sferoidale.

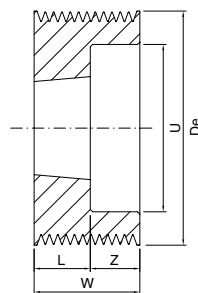
PULEGGE POLY-V

# Dimensioni delle pulegge Poly-V per montaggio con bussola conica SER-SIT®

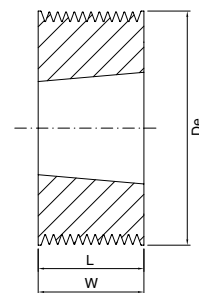


## » PBY Poly-V K

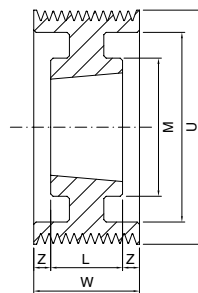
De [mm]	N° di gole	Fig.	Bussola SER-SIT®	L [mm]	z [mm]	M [mm]	U [mm]	W [mm]
106	4	7	1610	26	5,5	90	-	20,5
	6	2	1610	26	2,5	-	88	28,5
	8	2	1610	26	10	-	88	36,0
	10	3	1615	42	-	-	-	42,0
	12	2	1615	42	7	-	88	49,0
112	4	7	1610	26	5,5	90	-	20,5
	6	2	1610	26	2,5	-	94	28,5
	8	2	1610	26	10	-	94	36,0
	10	3	1615	42	-	-	-	42,0
	12	2	1615	42	7	-	94	49,0
118	4	7	1610	26	5,5	90	-	20,5
	6	7	2012	32	3,5	110	-	28,5
	8	2	2012	32	4	-	98	36,0
	10	2	2012	32	10	-	98	42,0
	12	2	2012	32	17	-	98	49,0
125	4	8	1610	26	5,5	90	109	20,5
	6	7	2012	32	3,5	110	-	28,5
	8	2	2012	32	4	-	105	36,0
	10	2	2012	32	10	-	105	42,0
	12	2	2517	45	4	-	105	49,0
132	4	8	1610	26	5,5	90	116	20,5
	6	7	2012	32	3,5	110	-	28,5
	8	2	2012	32	4	-	112	36,0
	10	2	2012	32	10	-	112	42,0
	12	2	2517	45	4	-	112	49,0
140	4	8	1610	26	5,5	90	124	20,5
	6	7	2517	45	16,5	120	-	28,5
	8	7	2517	45	9	120	-	36,0
	10	7	2517	45	3	120	-	42,0
	12	2	2517	45	4	-	124	49,0
150	4	8	1610	26	5,5	90	134	20,5
	6	7	2517	45	16,5	120	-	28,5
	8	7	2517	45	9	120	-	36,0
	10	7	2517	45	3	120	-	42,0
	12	2	2517	45	4	-	130	49,0
160	4	8	2012	32	11,5	110	144	20,5
	6	8	2517	45	16,5	120	140	28,5
	8	8	2517	45	9	120	140	36,0
	10	8	2517	45	3	120	140	42,0
	12	2	2517	45	4	-	140	49,0
170	4	8	2012	32	11,5	110	154	20,5
	6	8	2517	45	16,5	120	150	28,5
	8	8	2517	45	9	120	150	36,0
	10	7	2517	45	3	120	150	42,0
	12	2	2517	45	4	-	150	49,0
180	4	6	2012	32	5,75	110	164	20,5
	6	6	2517	45	8,25	120	160	28,5
	8	6	2517	45	4,5	120	160	36,0
	10	6	2517	45	1,5	120	160	42,0
	12	5	2517	45	2	120	160	49,0
190	4	6	2012	32	5,75	110	174	20,5
	6	6	2517	45	8,25	120	170	28,5
	8	6	2517	45	4,5	120	170	36,0
	10	6	2517	45	1,5	120	170	42,0
	12	5	2517	45	2	120	170	49,0
200	4	6	2012	32	5,75	110	184	20,5
	6	6	2517	45	8,25	120	180	28,5
	8	6	2517	45	4,5	120	180	36,0
	10	6	2517	45	1,5	120	180	42,0
	12	5	2517	45	2	120	180	49,0



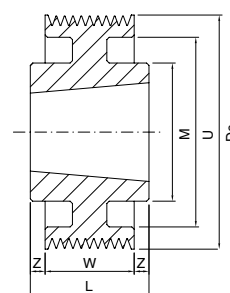
2



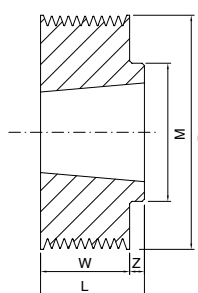
3



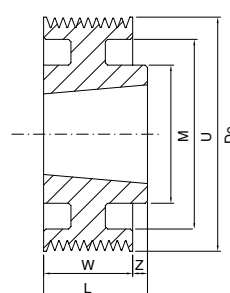
5



6



7



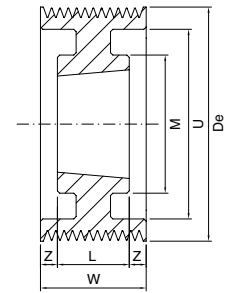
8

## Dimensioni delle pulegge Poly-V per montaggio con bussola conica SER-SIT®

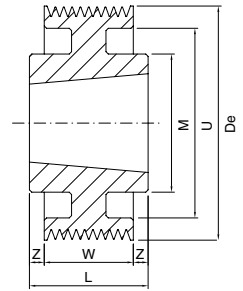


### » PBV Poly-V K

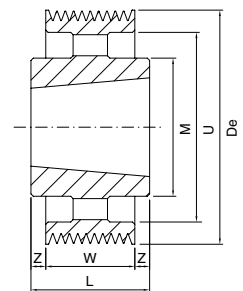
De [mm]	N° di gole	Fig.	Bussola SER-SIT®	L [mm]	z [mm]	M [mm]	U [mm]	W [mm]
212	4	6	2012	32	5,75	110	196	20,5
	6	6	2517	45	8,25	120	192	28,5
	8	6	2517	45	4,5	120	192	36,0
	10	6	2517	45	1,5	120	192	42,0
	12	5	2517	45	2	120	192	49,0
224	4	6	2012	32	5,75	110	208	20,5
	6	6	2517	45	8,25	120	204	28,5
	8	6	2517	45	4,5	120	204	36,0
	10	6	2517	45	1,5	120	204	42,0
	12	5	2517	45	2	120	204	49,0
236	4	6	2012	32	5,75	110	220	20,5
	6	6	2517	45	8,25	120	216	28,5
	8	6	2517	45	4,5	120	216	36,0
	10	6	2517	45	1,5	120	216	42,0
	12	5	2517	45	2	120	216	49,0
250	4	9	2012	32	5,75	110	234	20,5
	6	6	2517	45	8,25	120	230	28,5
	8	6	2517	45	4,5	120	230	36,0
	10	6	2517	45	1,5	120	230	42,0
	12	5	2517	45	2	120	230	49,0
280	4	9	2012	32	5,75	110	264	20,5
	6	9	2517	45	8,25	120	260	28,5
	8	9	2517	45	4,5	120	260	36,0
	10	9	3020	52	5	146	256	42,0
	12	9	3020	52	1,5	146	256	49,0
315	4	9	2012	32	5,75	110	299	20,5
	6	9	2517	45	8,25	120	295	28,5
	8	9	2517	45	4,5	120	295	36,0
	10	9	3020	52	5	146	285	42,0
	12	9	3020	52	1,5	146	285	49,0
355	4	9	2517	45	12,25	120	339	20,5
	6	9	2517	45	8,25	120	339	28,5
	8	9	3020	52	8	146	335	36,0
	10	9	3020	52	5	146	335	42,0
	12	9	3020	52	1,5	146	335	49,0
400	4	9	2517	45	2,25	120	380	20,5
	6	9	2517	45	8,25	120	380	28,5
	8	9	3020	52	8	146	370	36,0
	10	9	3020	52	5	146	370	42,0
	12	9	3020	52	1,5	146	370	49,0
450	4	9	2517	45	12,25	120	420	20,5
	6	9	2517	45	8,25	120	420	28,5
	8	9	3020	52	8	146	420	36,0
	10	9	3020	52	5	146	420	42,0
	12	9	3020	52	1,5	146	420	49,0
500	4	9	2517	45	12,25	120	470	20,5
	6	9	2517	45	8,25	120	470	28,5
	8	9	3020	52	8	146	470	36,0
	10	9	3020	52	5	146	470	42,0
	12	9	3020	52	1,5	146	470	49,0



5



6



9

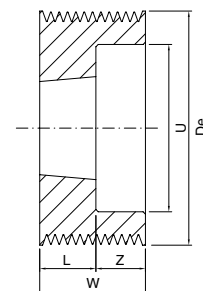
## Dimensioni delle pulegge Poly-V per montaggio con bussola conica SER-SIT®



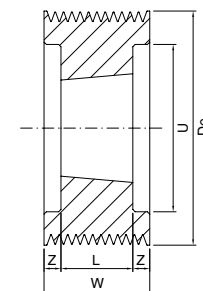
### PBY Poly-V L

De [mm]	N° di gole	Fig.	Bussola SER-SIT®	L [mm]	z [mm]	U [mm]	W [mm]
75	6**	2	1210	26	12,5	56	38,5
	8**	2	1210	26	22	56	48,0
	10	2	1215	42	15	56	57,0
	12	2	1215	42	25	56	67,0
80	6	2	1210	26	12,5	56	38,5
	8	2	1210	26	22	56	48,0
	10	2	1215	42	15	56	57,0
	12	2	1215	42	25	56	67,0
85	6	2	1210	26	12,5	61	38,5
	8	2	1210	26	22	61	48,0
	10	2	1215	42	15	61	57,0
	12	2	1215	42	25	61	67,0
90	16	4	1215	42	22	61	86,0
	6	2	1210	26	12,5	66	38,5
	8	2	1210	26	22	66	48,0
	10	2	1215	42	15	66	57,0
95	12	2	1215	42	25	66	67,0
	16	4	1215	42	22	66	86,0
	6	2	1210	26	12,5	71	38,5
	8	2	1210	26	22	71	48,0
100	10	2	1215	42	15	71	57,0
	12	2	1215	42	25	71	67,0
	16	4	1215	42	22	71	86,0
	6	2	1610	26	12,5	76	38,5
106	8	2	1610	26	22	76	48,0
	10**	2	2012	32	25	79	57,0
	12**	2	2012	32	35	79	67,0
	16**	4	2012	32	27	79	86,0
112	6	2	1610	26	12,5	82	38,5
	8	2	1610	26	22	82	48,0
	10**	2	2012	32	25	82	57,0
	12**	2	2012	32	35	82	67,0
118	16**	4	2012	32	27	82	86,0
	6	2	1610	26	12,5	88	38,5
	8	2	1610	26	22	88	48,0
	10	2	2012	32	25	88	57,0
125	12	2	2012	32	35	88	67,0
	16	4	2012	32	27	88	86,0
	6	2	2517	45	6,5	94	38,5
	8	2	2517	45	16	94	48,0
132	10	4	2517	45	6	97	57,0
	12	4	2517	45	11	97	67,0
	16	4	2517	45	20,5	97	86,0
	20	4	2517	45	30	97	105,0
125	6	2	2012	32	6,5	101	38,5
	8	2	2012	32	16	101	48,0
	10	4	2517	45	6	101	57,0
	12	4	2517	45	11	101	67,0
132	16	4	2517	45	20,5	101	86,0
	20	4	2517	45	30	101	105,0
	6	2	2012	32	6,5	108	38,5
	8	2	2012	32	16	108	48,0
132	10	4	2517	45	6	108	57,0
	12	4	2517	45	11	108	67,0
	16	4	2517	45	20,5	108	86,0
	20	4	2517	45	30	108	105,0

\*\*= Materiale: ghisa sferoidale.



2



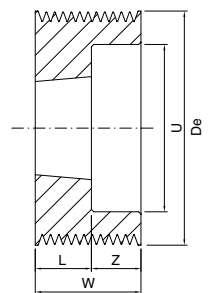
4

# Dimensioni delle pulegge Poly-V per montaggio con bussola conica SER-SIT®

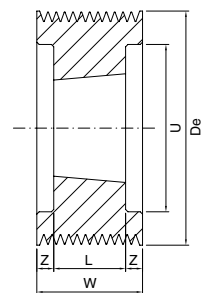


## » PBY Poly-V L

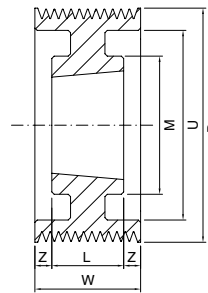
De [mm]	N° di gole	Fig.	Bussola SER-SIT®	L [mm]	z [mm]	M [mm]	U [mm]	W [mm]
140	6	7	2517	45	6,5	120	-	38,5
	8	2	2517	45	3	-	116	48,0
	10	4	2517	45	6	-	116	57,0
	12	4	2517	45	11	-	116	67,0
	16	4	2517	45	20,5	-	116	86,0
150	20*	4	3020	52	26,5	-	116	105,0
	6	7	2517	45	6,5	120	-	38,5
	8	2	2517	45	3	-	126	48,0
	10	4	2517	45	6	-	126	57,0
	12	4	2517	45	11	-	126	67,0
160	16	4	2517	45	20,5	-	126	86,0
	20	4	3020	52	26,5	-	126	105,0
	6	7	2517	45	6,5	120	-	38,5
	8	2	2517	45	3	-	136	48,0
	10	4	2517	45	6	-	136	57,0
170	12	4	2517	45	11	-	136	67,0
	16	4	3020	52	17	-	136	86,0
	20	4	3020	52	26,5	-	136	105,0
	6	8	2517	45	6,5	120	146	38,5
	8	2	2517	45	3	-	146	48,0
180	10	4	2517	45	6	-	146	57,0
	12	4	2517	45	11	-	146	67,0
	16	4	3020	52	17	-	146	86,0
	20	4	3020	52	26,5	-	146	105,0
	6	6	2517	45	3,25	120	156	38,5
190	8	5	2517	45	1,5	120	156	48,0
	10	5	2517	45	6	120	156	57,0
	12	5	2517	45	11	120	156	67,0
	16	4	3020	52	17	146	166	86,0
	20	4	3020	52	26,5	146	166	105,0
200	6	6	2517	45	3,25	120	176	38,5
	8	5	2517	45	1,5	120	176	48,0
	10	4	3020	52	2,5	146	176	57,0
	12	4	3020	52	7,5	146	176	67,0
	16	4	3020	52	17	146	176	86,0
212	20	4	3535	89	8	-	176	105,0
	6	6	2517	45	3,25	120	188	38,5
	8	5	2517	45	1,5	120	188	48,0
	10	4	3020	52	2,5	146	188	57,0
	12	4	3020	52	7,5	146	188	67,0
224	16	4	3020	52	17	146	188	86,0
	20	4	3535	89	8	-	188	105,0
	6	6	2517	45	3,25	120	202	38,5
	8	5	2517	45	1,5	120	202	48,0
	10	5	3020	52	2,5	146	202	57,0
236	12	5	3020	52	7,5	146	202	67,0
	16	5	3020	52	17	146	214	86,0
	20	5	3535	89	8	178	202	105,0
	6	6	2517	45	3,25	120	214	38,5
	8	5	2517	45	1,5	120	214	48,0
248	10	5	3020	52	2,5	146	214	57,0
	12	5	3020	52	7,5	146	214	67,0
	16	5	3020	52	17	146	214	86,0
	20	5	3535	89	8	178	214	105,0



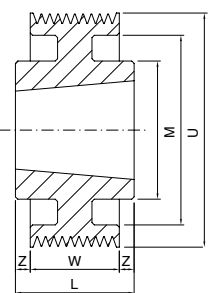
2



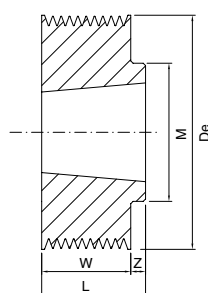
4



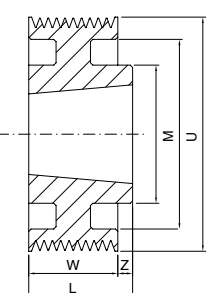
5



6



7



8

\*\*= Materiale: ghisa sferoidale.

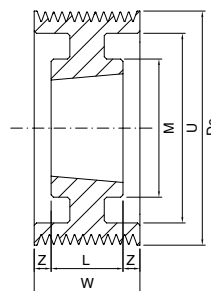
PULEGGE POLY-V

## Dimensioni delle pulegge Poly-V per montaggio con bussola conica SER-SIT®

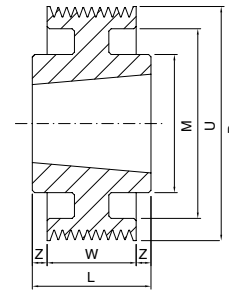


### » PBY Poly-V L

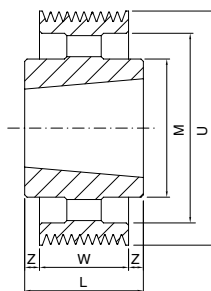
De [mm]	N° di gole	Fig.	Bussola SER-SIT®	L [mm]	z [mm]	M [mm]	U [mm]	W [mm]
<b>250</b>	6	9	2517	45	3,25	120	228	38,5
	8	5	2517	45	1,5	120	228	48,0
	10	5	3020	52	2,5	146	228	57,0
	12	5	3020	52	7,5	146	228	67,0
	16	5	3020	52	17	146	228	86,0
<b>280</b>	20	5	3535	89	8	178	226	105,0
	6	9	2517	45	3,25	120	256	38,5
	8	6	3020	52	2	146	256	48,0
	10	5	3020	52	2,5	146	256	57,0
	12	5	3020	52	7,5	146	256	67,0
<b>315</b>	16	6	3535	89	1,5	178	256	86,0
	20	5	3535	89	8	178	256	105,0
	6	9	2517	45	3,25	120	285	38,5
	8	9	3020	52	2	146	285	48,0
	10	6	3535	89	16	178	285	57,0
<b>355</b>	12	6	3535	89	11	178	285	67,0
	16	6	3535	89	1,5	178	285	86,0
	20	5	4040	102	1,5	215	285	105,0
	6	9	3020	52	6,75	146	325	38,5
	8	9	3020	52	2	146	325	48,0
<b>400</b>	10	9	3535	89	16	178	325	57,0
	12	9	3535	89	11	178	325	67,0
	16	9	3535	89	1,5	178	325	86,0
	20	5	4040	102	1,5	215	325	105,0
	6	9	3020	52	6,75	146	370	38,5
<b>450</b>	8	9	3020	52	2	146	370	48,0
	10	9	3535	89	16	178	370	57,0
	12	9	3535	89	11	178	370	67,0
	16	9	3535	89	1,5	178	370	86,0
	20	10	4040	102	1,5	215	370	105,0
<b>500</b>	6	9	3020	52	6,75	146	470	38,5
	8	9	3020	52	2	146	470	48,0
	10	9	3535	89	16	178	470	57,0
	12	9	3535	89	11	178	470	67,0
	16	9	3535	89	1,5	178	470	86,0
<b>630</b>	20	9	5050	127	11	267	470	105,0
	6	9	3020	52	6,75	146	600	38,5
	8	9	3020	52	2	146	600	48,0
	10	9	3535	89	16	178	600	57,0
	12	9	3535	89	11	178	600	67,0
<b>800</b>	16	9	4040	102	8	215	600	86,0
	20	9	5050	127	11	267	600	105,0
	6	9	3535	89	25,2	178	770	38,5
	8	9	3535	89	20,5	178	770	48,0
	10	9	4040	102	22,5	215	770	57,0
<b>800</b>	12	9	4040	102	17,5	215	770	67,0
	16	9	5050	127	20,5	267	770	86,0
	20	9	5050	127	11	267	770	105,0



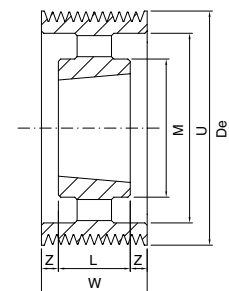
5



6



9



10